

Key Action 2: Strategic Partnerships for school education (KA229 and KA201)

Project management and implementation



Key Action 2: Strategic Partnerships for school education (KA229 and KA201)

Learning, teaching and training activities (= mobilities)

A) Travel



B) Individual Support



C) Linguistic Support for long-term mobilities

C) KIELIVALMENNUSTUKI
PITKÄKESTOISEEN
VAIHTOON



D) Exceptional costs (expensive travel costs)

D) POIKKEUKSELLISET
KULUT



Key Action 2: Strategic Partnerships for school education (KA229 and KA201)

Special needs support (participants with disabilities)



Exceptional costs

POIKKEUKSELLISET
KULUT



Contribution to real costs related to subcontracting or purchase of goods and services.

Key Action 2: Strategic Partnerships supporting innovation KA201

Transnational Project Meetings



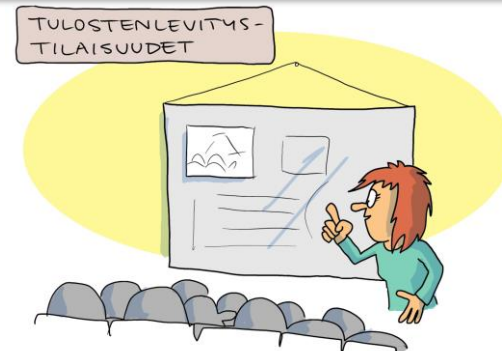
Intellectual outputs



Intellectual outputs/tangible deliverables of the project

(such as curricula, pedagogical and youth work materials, open educational resources (OER), IT tools, analyses, studies, peer-learning methods, etc.)

Multiplier events



National and transnational conferences, seminars, events sharing and disseminating the intellectual outputs